

# Introducing the Bing Maps V8 control

The Bing Maps Version 8 control is an all new *high-performance* and *developer-friendly* map control, with *rich new features* such as Streetside imagery, Autosuggest, and spatial analytic tools.

## EASY TO USE

The Bing Maps V8 control, Microsoft's modern web mapping platform, makes adding a map to an app as easy as adding a chart or other standard controls. The Bing Maps V8 control SDK reduces development time by requiring less code to implement more functionality. Bing Maps V8 control directly integrates content including administrative boundary data, a Spatial Math module and versioning support to simplify development.

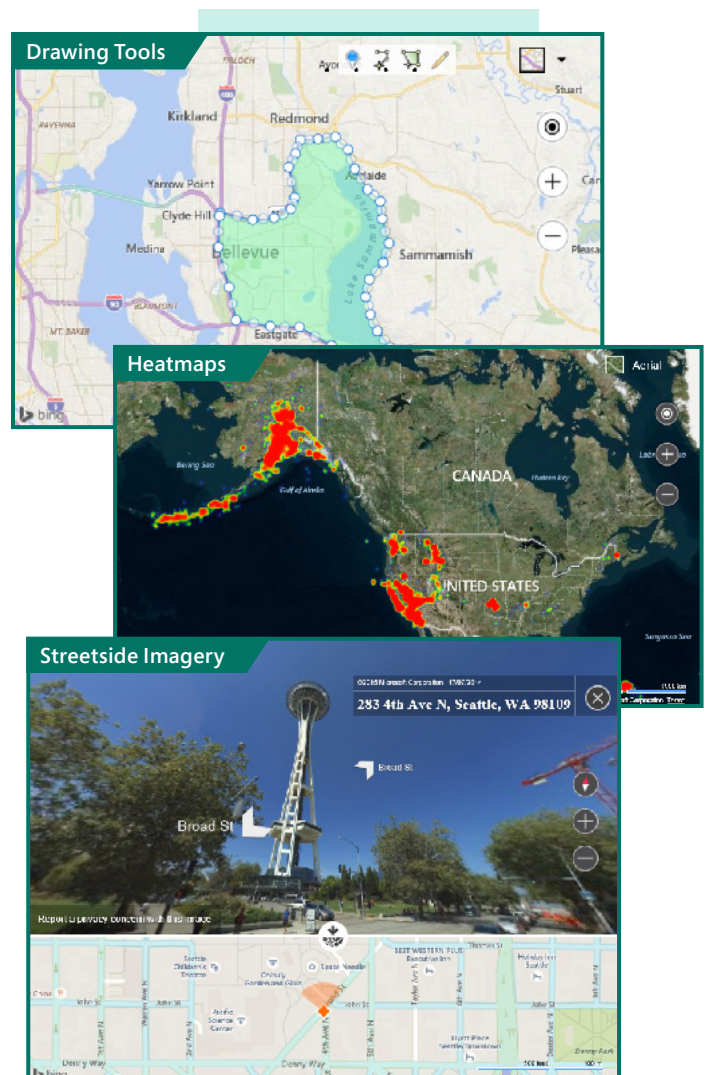
## RICH, EXPANDED FEATURE SET

Bing Maps V8 control introduces a range of new features designed to make business intelligence and data visualization richer and more interactive, as well as make it easy for users to find the right location and explore rich imagery.

- Autosuggest – Provides suggestions dynamically as you type a location in a search box.
- Clustering – Visualize large sets of pushpins, by having overlapping pushpins group and ungroup automatically as users change zoom level.
- GeoJSON Support – Easily import and export GeoJSON data, one of the most common file formats used for sharing and storing spatial data.
- Heatmaps – Visualize the density of data points as a heatmap.
- Streetside imagery – Explore 360-degrees of street-level imagery.
- Touch support – Easily navigate Bing Maps using a touch-screen device as well as mouse or keyboard.
- Spatial Math module – Provides a large set of spatial math operations from calculating distances and areas, to performing boolean operations on shapes.
- Administrative boundary data – Easily access Bing Maps boundary data.

## HIGH PERFORMANCE

Bing Maps V8 control makes use of the HTML5 canvas, which provides a significant rendering performance boost over previous map controls, allowing users to view more data and gain deeper insights.



## FEATURE COMPARISON

Bing Maps V8 control includes key features, such as Autosuggest and customized map styles coupled with improved performance.

See what features have been added to our latest version of the control:

Category	Feature	V7	V8
Geocoding	Forward geocoding	x	x
	Reverse geocoding	x	x
	Batch geocoding	x	x
Directions	Driving, walking and transit directions	x	x
Search	Autosuggest		x
	Bing Spatial Data Services module		x
	Administrative boundary data		x
Imagery	Road	x	x
	Aerial	x	x
	Ordnance Survey maps of the UK	x	x
	Road (Night mode)		x
	Road (Grayscale)		x
	Traffic Flow	x	x
	Streetside		x
Versioning	Experimental Branch		x
	Release Branch	x	x
	Frozen Branch		x
	Heatmaps		x
Other Map Features	Pushpin clustering		x
	Drawing tools		x
	Spatial Math module		x
	Vector labels		x
	Label collision detection		x
	Test data generator		x
	Touch support	x	x
Supported Data Formats	GeoJSON		x
	Multiple culture/ language support	x	x
Localization Support	Automatic region/culture detection		x
	JavaScript	x	x
Development	TypeScript		x
	Interactive SDK	x	x
	Thousands of Pushpins		x
Performance	Thousands of Polygons		x

This document is for informational purposes only. Microsoft makes no warranties, express or implied, in this summary. All rights reserved. Microsoft and Bing are trademarks of Microsoft Corporation. ©2016 Microsoft Corporation.

## LEARN ABOUT OUR API OPTIONS

The Bing Maps platform provides multiple API options for your application.

Use this information or visit <https://www.microsoft.com/maps/choose-your-bing-maps-API.aspx> to help determine which API best suits your needs.

### Web Map Control

Universal mapping control, supported on standard PC & Mac browsers, as well as many mobile platforms. This API is ideal for web-based and cross platform applications.

#### Target Platforms

Web, Mobile

#### Languages

JavaScript, TypeScript

### REST Services

The Bing Maps REST Services are excellent services for performing tasks such as geocoding, reverse-geocoding, routing and static imagery. They can be easily accessed from almost any development environment.

#### Target Platforms

Web, Mobile, Desktop

#### Languages

JSON, XML

### Spatial Data Services

This service provides four key features; batch geocoding, ability to store and expose your spatial data as a REST service, access to point of interest and administrative boundary data.

#### Target Platforms

Web, Mobile, Desktop

#### Languages

JSON, ATOM

### Universal Windows App Platform

The Windows 10 Universal Windows App Platform lets you build map apps that target a range of Windows 10 devices.

#### Target Platforms

Phone, Tablets, Desktop

#### Languages

C#, VB, C++

### Windows Presentation Foundation

The Bing Maps WPF control is an excellent control for creating desktop-based applications.

#### Target Platforms

Desktop (Windows 10 or earlier)

#### Languages

C#, VB

## LEARN MORE

Explore the following resources to learn more about Bing Maps:

Bing Maps Website [www.microsoft.com/maps](http://www.microsoft.com/maps)

Licensing Advice [www.microsoft.com/maps/Licensing/licensing.aspx](http://www.microsoft.com/maps/Licensing/licensing.aspx)

Bing Maps Blogs <http://blogs.bing.com/maps/>

Bing Maps Twitter <https://twitter.com/bingmaps>

Bing Maps Case Studies <https://customers.microsoft.com/Pages/advancedsearch.aspx?mrmcproducts=Bing%20Maps>